

Main & Main Pin Corner Build-To-Suit or Ground Lease

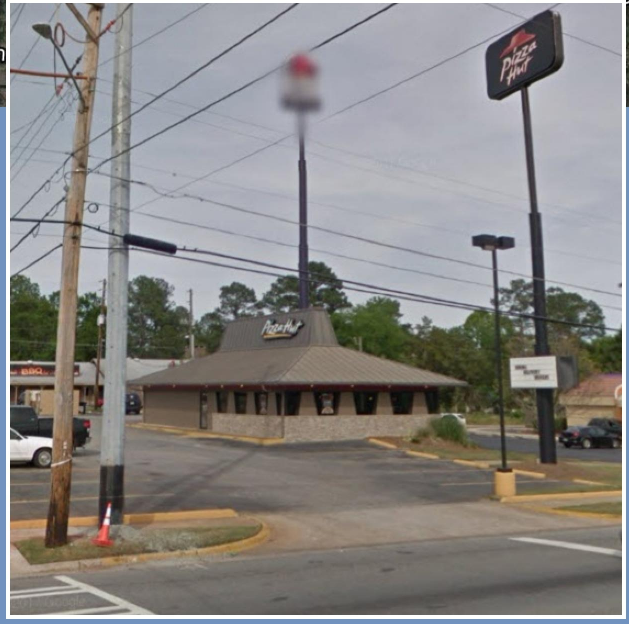
1344 Sam Nunn Blvd, Perry, GA 31069



Build-To-Suit or Ground Lease

Demographics:	5 Min DT	15 Min DT	30 Min DT
Total Population	15,526	102,305	301,071
Average HH Income	\$62,463	\$74,656	\$60,943
Median Age	38	35.5	35.9
Daytime Employment	9,929	34,683	143,203

Traffic Counts: +/- 17,000 Sam Nunn Blvd



No warranty expressed or implied has been made to the accuracy of the information provided herein, no liability assumed for error omission Licensed Real Estate Broker

Main & Main Pin Corner Build-To-Suit or Ground Lease 1344 Sam Nunn Blvd, Perry, GA 31069



-Main & main lighted pin-corner parcel available for build-to-suit or ground lease

-Cross-access and cross-parking in place with adjacent Taco Bell parcel

-Summer 2018 delivery

-Interstate pylon signage

-Interstate (I-75) play and neighborhood play

-Best corner in middle of primary QSR and retail node of Perry, GA

Contact Us:

Brad Westbrook
brad@westbrookre.com
678.384.7672

Rocky Moore
rocky@westbrookre.com
678.384.7678

SHULER

PROPERTIES